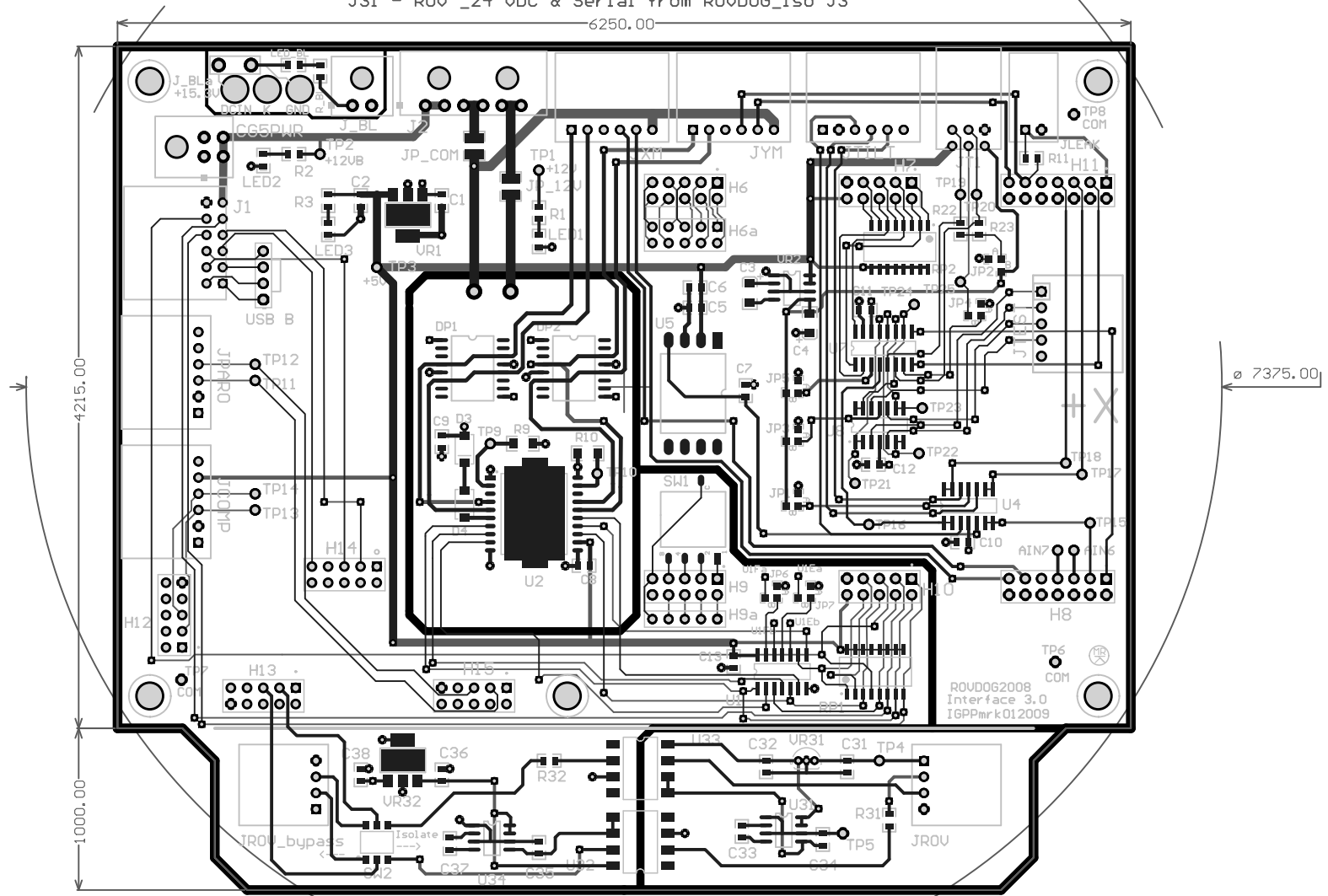


JTEST connects to CG5 analog JTEST1
 J1 connects to CG5 digital J1
 USB B - CG5 Digital J1

BL1700 Power +15.3 VDC from ROVDOG_Iso J8
 J2 +12 VDC & +12 VBU from ROVDOG_Iso J1; to CG5 PWR
 J31 - ROV_24 VDC & Serial from ROVDOG_Iso J3



□	158	20mil	0.508mm	PTH
○	7	25mil	0.635mm	PTH
◊	63	35mil	0.889mm	PTH
✕	50	35.433mil	0.9mm	PTH
▽	116	40mil	1.016mm	PTH
∇	4	50mil	1.27mm	PTH
◇	4	118mil	2.9972mm	PTH
✳	8	150mil	3.81mm	NPTH
	410	Total		

Drill Holes

- H6 - H15 connect to BL1700
- H6 - H11 are fixed (mezzanine board)
- H12 - H15 connect w/ ribbon cable
- H6 - NC (future use)
- H7 - BL1700 mux control
- H8 - BL1700 analog inputs
- H9 - Hex Switch (select ROVDOG #)
- H10 - BL1700 X-Y motor control
- H11 - BL1700 analog inputs
- H12 - JCOMP (compass)
- H13 - J31 (ROV Serial I/O)
- H14 - CG5 J1
- H15 - JPARO (Paros pressure)